



## Romney House Marsham Street , London, SW1P 3DS £650,000

A fantastic bright 1 double bedroom apartment available for sale in this popular development in Westminster close to the River Thames, Houses of Parliament and Buckingham Palace. The apartment is in a quiet position on the 7th floor (with lift) with far reaching views and an underground parking space. It features a reception room, separate integrated kitchen, a modern bathroom. Residents benefit from a 24 hour concierge and a well-equipped gymnasium with a sauna and treatment room. Romney House is within walking distance to the transport links of St James's Park, Westminster and Victoria and the surrounding area also offers a variety of retail stores, including the Cardinal Place Shopping Centre as well as an abundance of amenities including a Tesco Local, a Little Waitrose, a Curzon Cinema and many new restaurants, namely, Iberica, Browns, La Tasca, Zizzi and Wagamama to name but a few. The Quilon and Cinnamon Club compliment the extensive range of existing restaurants.

Lease 980 years

Service charge : Approximately £3500 pa

### Viewing

Please contact us on if you wish to arrange a viewing appointment for this property or require further information.



1



1



1





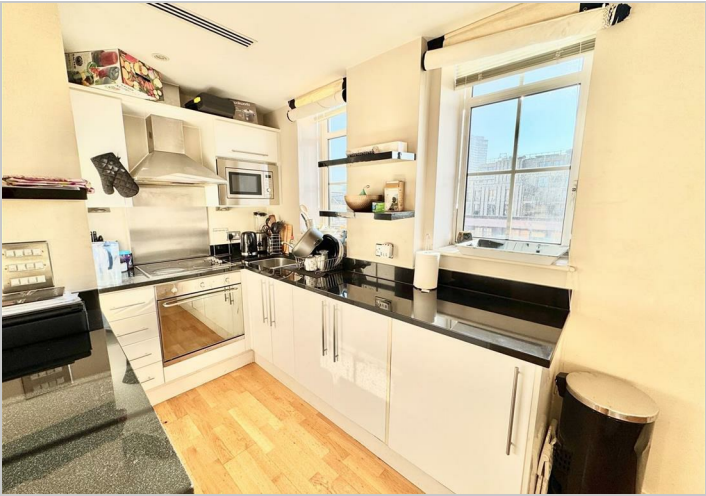
Floor Plan



Area Map



Energy Efficiency Graph



These particulars, whilst believed to be accurate are set out as a general outline only for guidance and do not constitute any part of an offer or contract. Intending purchasers should not rely on them as statements of representation of fact, but must satisfy themselves by inspection or otherwise as to their accuracy. No person in this firms employment has the authority to make or give any representation or warranty in respect of the property.