



Emanuel House 18 Rochester Row

Westminster, London, SW1P 1BS

£400,000

This is an ideal pied a terre in Central London giving easy access to the City and the West End. The Tate Gallery, Houses of Parliament and St James Park are a few minutes walk away and the shopping and transport facilities on Victoria Street are close at hand.

The flat is on the second floor (with lift), presented in good condition throughout, and is ready to move into with a modern kitchen and bathroom. The service charges are reasonable and the resident porter is helpful.

Service Charge : Currently approximately £3000 p.a.

Lease: Approximately 81 years remaining unexpired.

Viewing

Please contact us on if you wish to arrange a viewing appointment for this property or require further information.



1



0

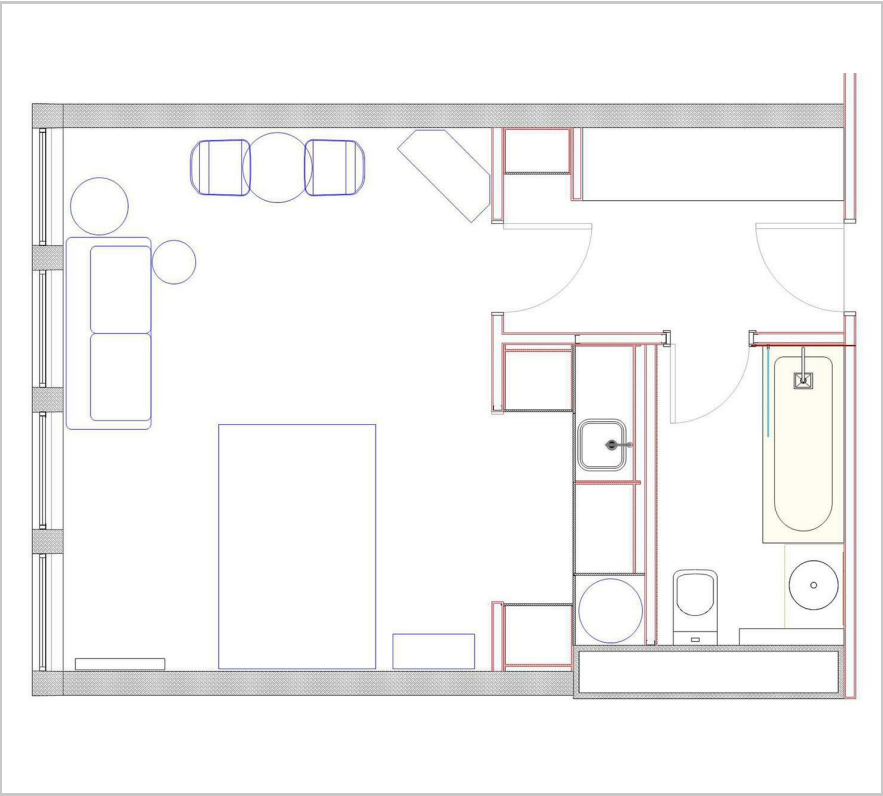


0



C

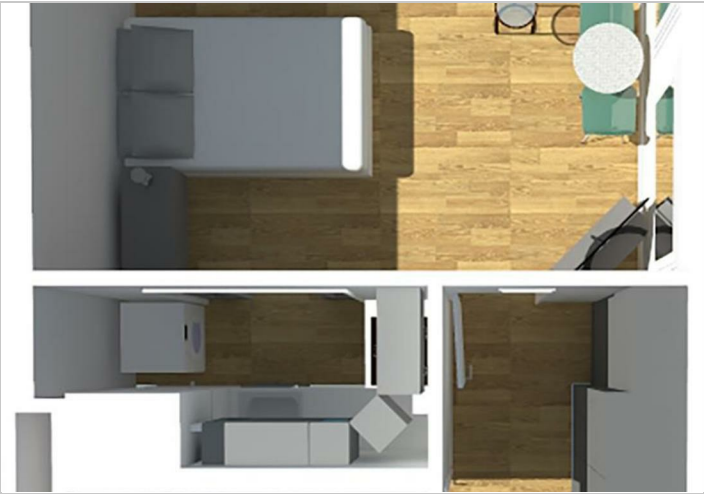
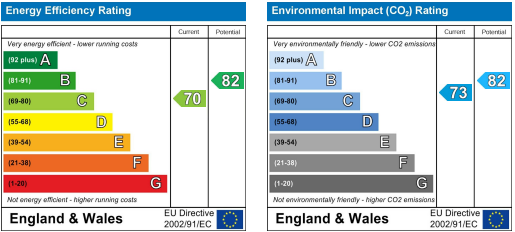
Floor Plan



Area Map



Energy Efficiency Graph



These particulars, whilst believed to be accurate are set out as a general outline only for guidance and do not constitute any part of an offer or contract. Intending purchasers should not rely on them as statements of representation of fact, but must satisfy themselves by inspection or otherwise as to their accuracy. No person in this firm's employment has the authority to make or give any representation or warranty in respect of the property.