



Astral House, Maunsel Street

Westminster SW1P 2EA

£390,000

Astral House lies at the top of Maunsel Street between Horseferry Road and Vincent Square. This is an excellent location as it is close to four underground stations and only a short walk away from Victoria Street, St James's Park and the Houses of Parliament.

This bright, newly refurbished studio apartment is presented in ready to move into condition and will provide the ideal London pied a terre.

Lease : 144 years remaining unexpired

Service charge : £2600 for the current year

Reserve fund : £3100 for the current year

Viewing

Please contact us on if you wish to arrange a viewing appointment for this property or require further information.



0



1

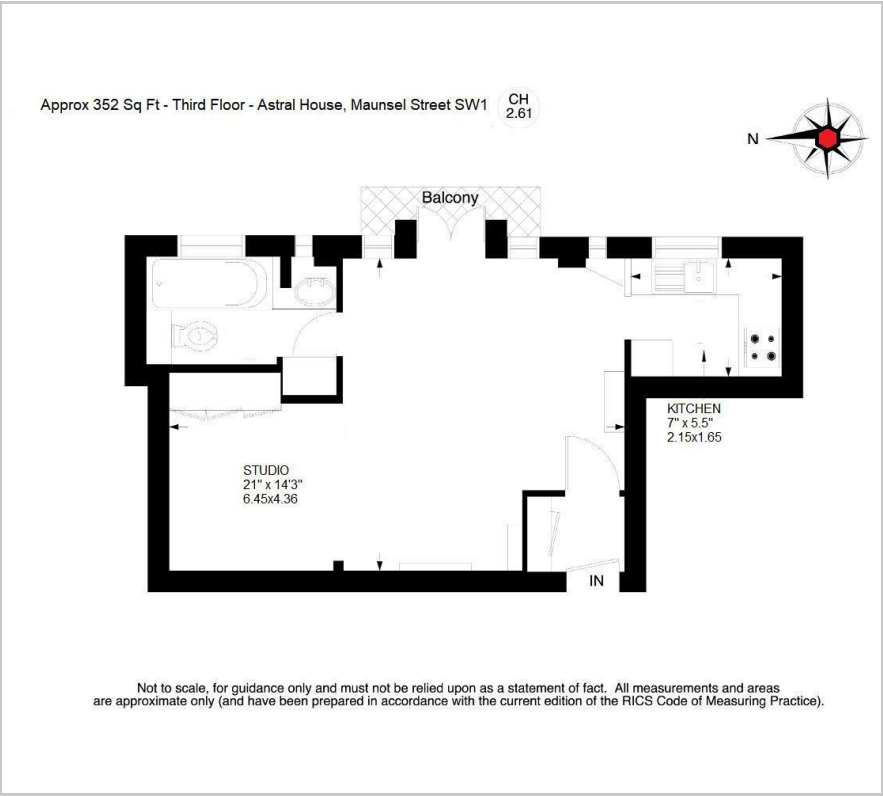


1



E

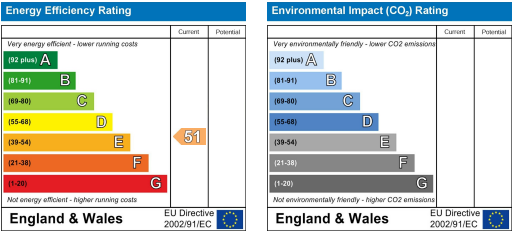
Floor Plan



Area Map



Energy Efficiency Graph



These particulars, whilst believed to be accurate are set out as a general outline only for guidance and do not constitute any part of an offer or contract. Intending purchasers should not rely on them as statements of representation of fact, but must satisfy themselves by inspection or otherwise as to their accuracy. No person in this firms employment has the authority to make or give any representation or warranty in respect of the property.