



Vauxhall Bridge Road

Pimlico, London, SW1V 2LF

£1,700 Per month



Morgan House lies in the heart of Pimlico and is close to the shopping and transport facilities located in Tachbrook Street and Victoria. Pimlico underground and Tate Britain are also just a short walk away.

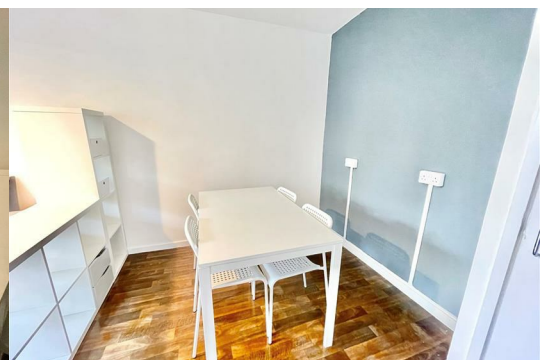
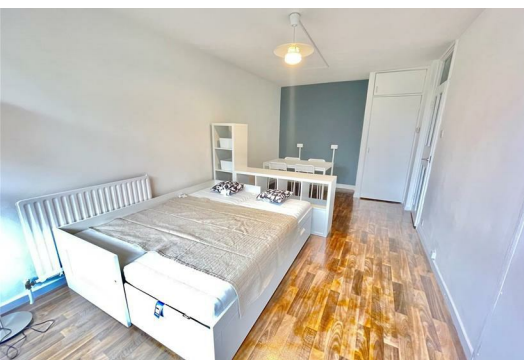
The flat is an excellent place to call your London base which is both convenient and great value for money.

The apartment benefits from just being newly decorated and has a fabulous balcony with great views over the communal gardens.

Heating and Hot Water included

Lowest council tax

Students welcome



Area Map



Floor Plans



Energy Efficiency Graph



These particulars, whilst believed to be accurate are set out as a general outline only for guidance and do not constitute any part of an offer or contract. Intending purchasers should not rely on them as statements of representation of fact, but must satisfy themselves by inspection or otherwise as to their accuracy. No person in this firms employment has the authority to make or give any representation or warranty in respect of the property.