



## Astral House Regency Place Westminster, London, SW1P 2EA

A spacious and light first floor flat located in the heart of Westminster. One bedroom apartments covering over 600 square feet are few and far between in Westminster and the generous accommodation in the flat means that there is space to live and work comfortably. There is the added bonus of a substantial walk-in wardrobe and storage space.

The entrance to the building is located in the very pretty Maunsel Street which runs into Vincent Square. The nearest underground station is St James's Park which is only a five minute walk away; meanwhile the shops and restaurants on Victoria Street are also close at hand.

Lease : 125 years from 24th June 2014

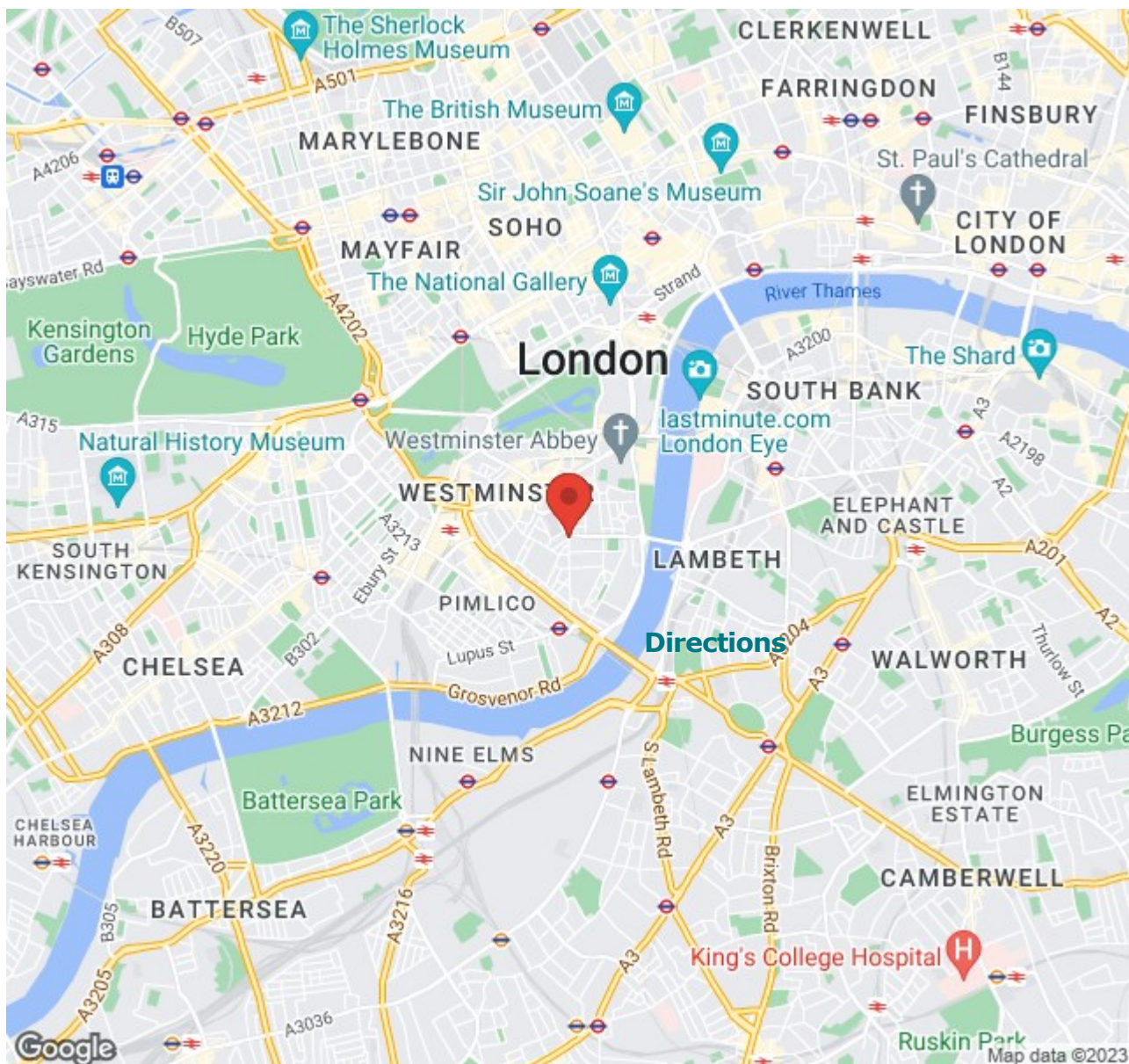
£550,000

# Astral House Regency Place

Westminster, London, SW1P 2EA



- Excellent reception room
- Kitchen
- Reasonable outgoings
- Close to Parliament and Victoria
- Double bedroom
- Bathroom
- Spacious and light
- Walk-in wardrobe
- Long lease
- Close to St James's Park underground





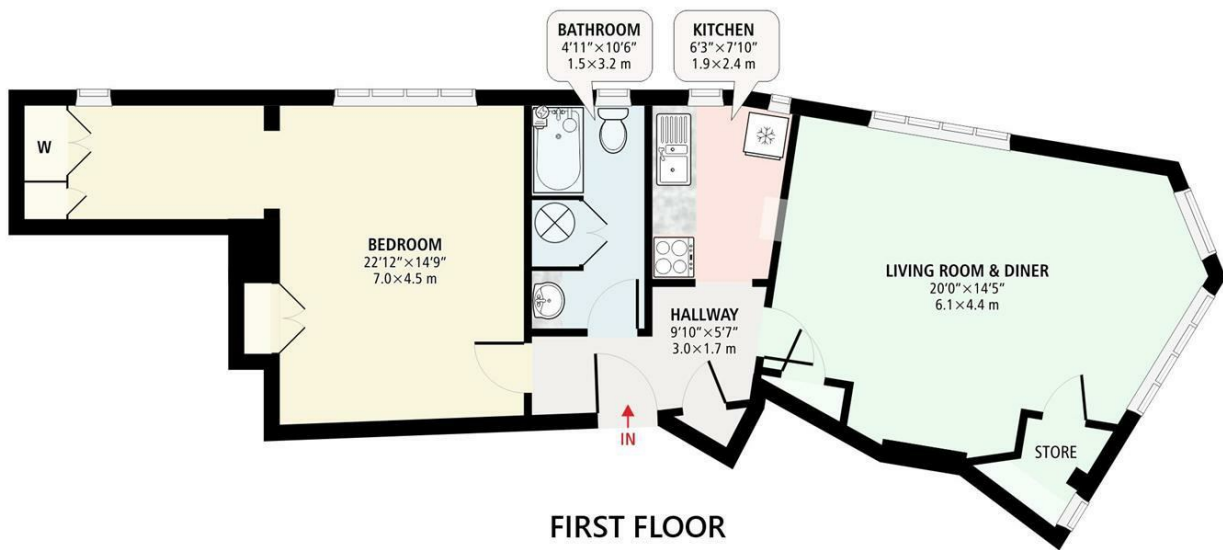
# Floor Plan



## 1 BEDROOM FLAT @ ASTRAL HOUSE



Total gross internal area: 657.5 sq. ft. | 61.08 sq. m.  
(approximate)



*Disclaimer: This floor plan is for illustrative purposes only. Whilst every attempt has been made in accordance with RISC Property Measurement Standards to ensure the accuracy of the plan contained here, measurements of doors, windows, fixtures and any other items are approximate. All measurements for the individual area lengths and widths are maximum, metered at the widest points. Due to rounding, numbers may not add up precisely. Plots and gardens are illustrative only and excluded from all area calculations. The services, systems and appliances shown have not been tested and no guarantee to their working order can be given.*

Copyright © 2023 JJsnap.co.uk All rights reserved.

These particulars, whilst believed to be accurate are set out as a general outline only for guidance and do not constitute any part of an offer or contract. Intending purchasers should not rely on them as statements of representation of fact, but must satisfy themselves by inspection or otherwise as to their accuracy. No person in this firm's employment has the authority to make or give any representation or warranty in respect of the property.

