



Royal Westminster Lodge 3 Elverton Street Westminster, London, SW1P 2QW

This fabulous TWO-BEDROOM apartment is situated in a very attractive purpose-built block in the heart of Victoria.

Set on the second floor, the apartment is offered on a furnished basis and spans a generous 800 sq. ft. in space.

It comprises of a large reception room, dining room, fully fitted modern kitchen, two good size bedrooms with storage space, en-suite to the master and a family bathroom.

Other benefits include wood floors throughout and excellent storage.

£700 Per week

Royal Westminster Lodge 3 Elverton Street

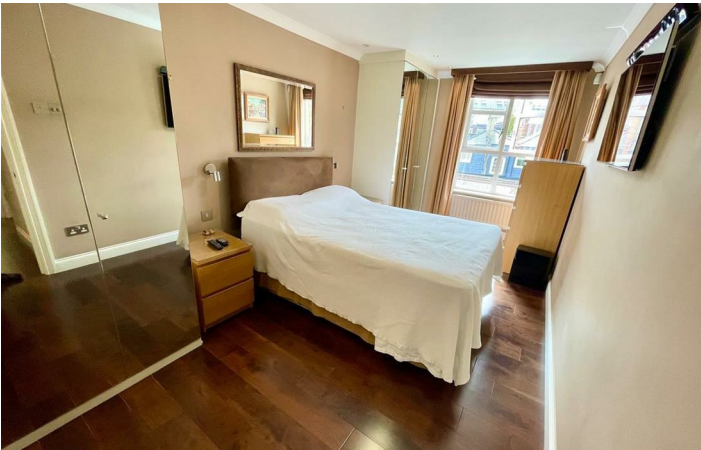
Westminster, London, SW1P 2QW



- 2 Bedroom
- 2 Bathroom
- Building Porter
- Lift
- Parking
- Close to Victoria station
- Nicely finished
- Dishwasher



Directions



Floor Plan



These particulars, whilst believed to be accurate are set out as a general outline only for guidance and do not constitute any part of an offer or contract. Intending purchasers should not rely on them as statements of representation of fact, but must satisfy themselves by inspection or otherwise as to their accuracy. No person in this firm's employment has the authority to make or give any representation or warranty in respect of the property.

Energy Efficiency Rating	Current	Potential
(92 plus) A Very energy efficient - lower running costs		
(81-91) B		
(69-80) C		
(55-68) D		
(39-54) E		
(21-38) F		
(1-20) G Not energy efficient - higher running costs		
England & Wales	EU Directive 2002/91/EC	

Environmental Impact (CO ₂) Rating	Current	Potential
(92 plus) A Very environmentally friendly - lower CO ₂ emissions		
(81-91) B		
(69-80) C		
(55-68) D		
(39-54) E		
(21-38) F		
(1-20) G Not environmentally friendly - higher CO ₂ emissions		
England & Wales	EU Directive 2002/91/EC	