



## Turner House Erasmus Street , London, SW1P 4DZ

Flats in Turner House on the Millbank Estate, rarely come to the market. This 2 Bedroom flat is on the second floor and directly overlooks the very pretty Millbank Gardens from the Reception room and both bedrooms. The flat is presented in great condition throughout and will be ready for the new tenant to walk into. The flat has good height ceilings and wonderful character and as such it would make someone the perfect London home.

Located just behind Tate Britain and close to Pimlico underground, it is also only a short walk away from Parliament and all the transport, shopping and restaurants in Victoria.

Available from Feb 2023

£600 Per week



# Turner House Erasmus Street

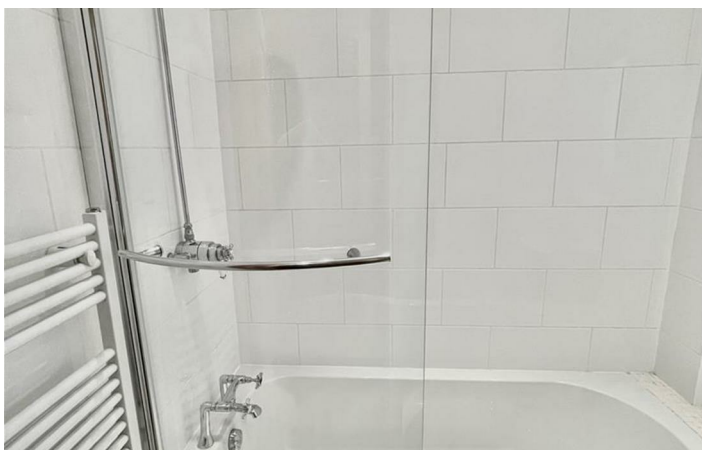
, London, SW1P 4DZ



- Overlooking Millbank gardens
- 2 Bedrooms
- Bathroom and seperate WC
- Close to Pimlico underground
- reception room
- Available Now
- Behind Tate Britain
- Great location
- Modern kitchen
- 2nd floor flat



**Directions**



Floor Plan

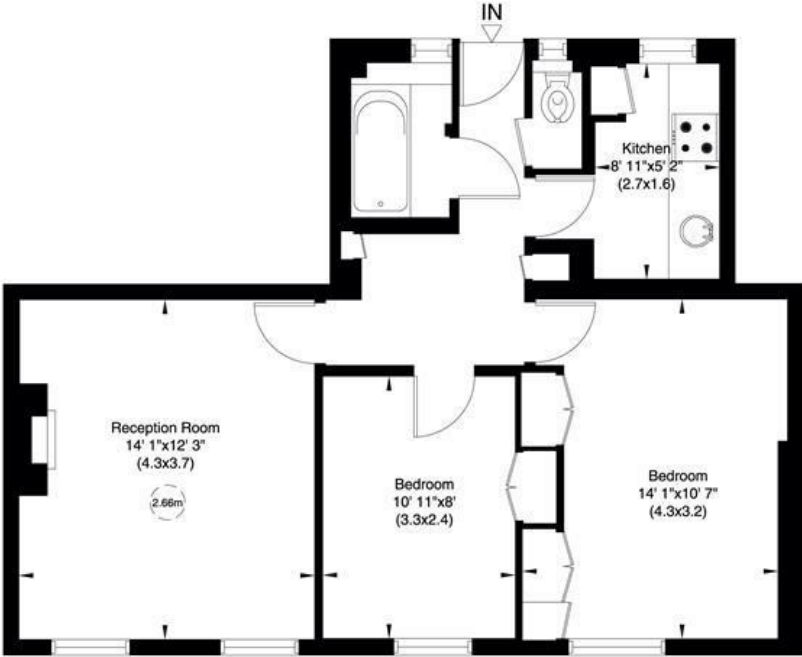
Turner House, Marsham Street, SW1

Gross internal area (approx.)

58 Sq m ( 624 Sq ft)

For identification only, Not to Scale

capital 020 8671 7722



Second Floor

Not to scale, for guidance only and must not be relied upon as a statement of fact. All measurements and areas are approximate only (and have been prepared in accordance with the current edition of the RICS Code of Measuring Practice).

These particulars, whilst believed to be accurate are set out as a general outline only for guidance and do not constitute any part of an offer or contract. Intending purchasers should not rely on them as statements of representation of fact, but must satisfy themselves by inspection or otherwise as to their accuracy. No person in this firms employment has the authority to make or give any representation or warranty in respect of the property.

