



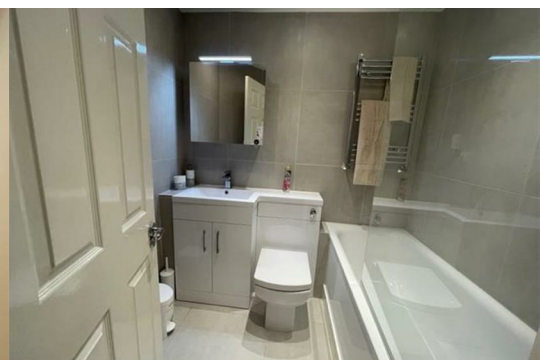
Ormond House Medway Street

Westminster, London, SW1P 2TB

£700 Per week



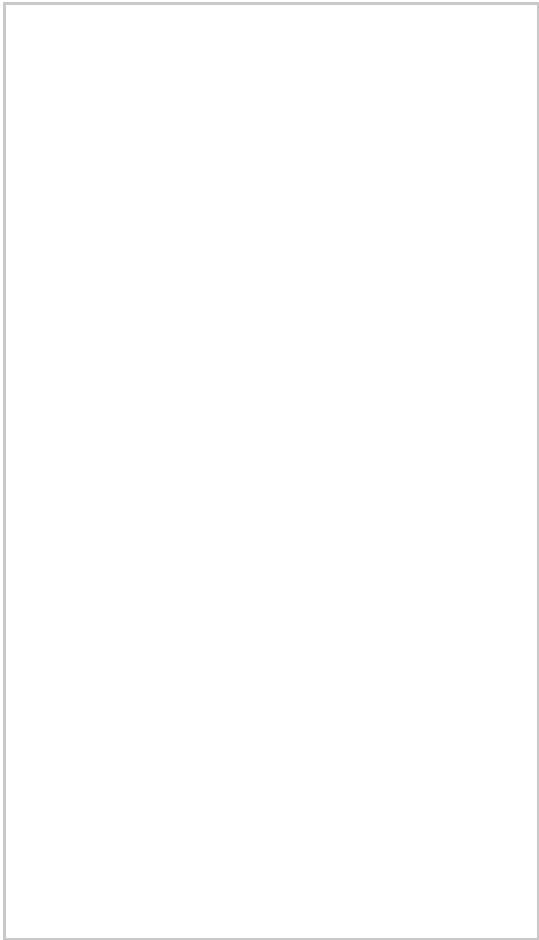
Two-bedroom, two-bathroom apartment. Master bedroom with en suite shower room 2nd double bedroom. Living room with balcony overlooking gardens. Separate kitchen lift and concierge. Rental inclusive of heating and hot water. Located moments from St James's Park Underground Station.



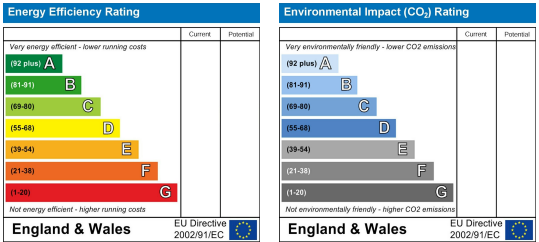
Area Map



Floor Plans



Energy Efficiency Graph



These particulars, whilst believed to be accurate are set out as a general outline only for guidance and do not constitute any part of an offer or contract. Intending purchasers should not rely on them as statements of representation of fact, but must satisfy themselves by inspection or otherwise as to their accuracy. No person in this firms employment has the authority to make or give any representation or warranty in respect of the property.