



Brunswick Court Regency Street

Westminster, London, SW1P 4AE
£650 per week

An excellent light maisonette in this solidly built purpose built block situated in the heart of Westminster. These properties feel like small houses with living accommodation downstairs and the bedrooms upstairs. The flat comes to the market in excellent condition, ready to move into. There are communal gardens and a decent usable private balcony.

The local area is extremely well connected with Victoria Railway Station providing national mainline services including the Gatwick Express, and underground stations at Victoria, St James's Park, Westminster and Pimlico all within convenient distances. Renowned and iconic local landmarks include St James's Park, the Houses of Parliament, Westminster Abbey & Westminster Cathedral, and the Tate Britain Gallery, all of which are just a short walk away.

- 2 Double bedrooms
- Excellent modern kitchen/dining room
- Bright reception room
- Communal gardens
- Balcony
- External and internal storage
- Close to 3 underground stations
- Close to Victoria Street
- Close to Parliament
- Close to Tate Gallery

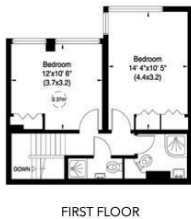
Viewing

Please contact us on if you wish to arrange a viewing appointment for this property or require further information.



Floor Plan

BRUNSWICK COURT
REGENCY STREET
LONDON SW1
Gross internal Area (approx.)
75 Sq m (808 Sq ft)

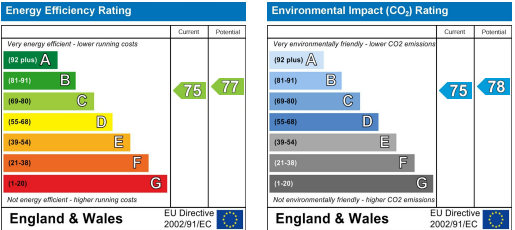


Not to scale, for guidance only and must not be relied upon as a statement of fact. All measurements and areas are approximate only (and have been prepared in accordance with the current edition of theRICS Code of Measuring Practice).

Area Map



Energy Efficiency Graph



These particulars, whilst believed to be accurate are set out as a general outline only for guidance and do not constitute any part of an offer or contract. Intending purchasers should not rely on them as statements of representation of fact, but must satisfy themselves by inspection or otherwise as to their accuracy. No person in this firms employment has the authority to make or give any representation or warranty in respect of the property.